



Z195.720-3===

Accessories

Z195.780



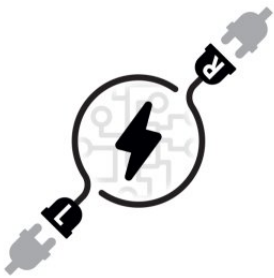
Standard electric system

Z195.781



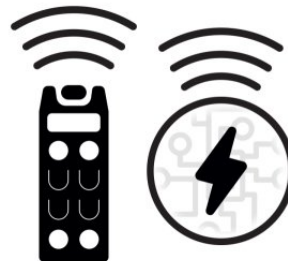
Configuration for 1 electric accessory

Z195.782



Configuration for 2 electric accessories

Z195.785



Configuration for remote control (2 speeds)

B9024.750-3

105 / 130 Ah AGM battery pack

B210.510-T

Battery charger (100-240) 10A 24V

DR212.702-3

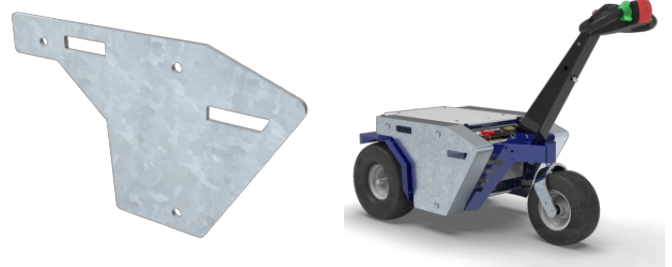
Turf wheels kit

DR112.701-3===

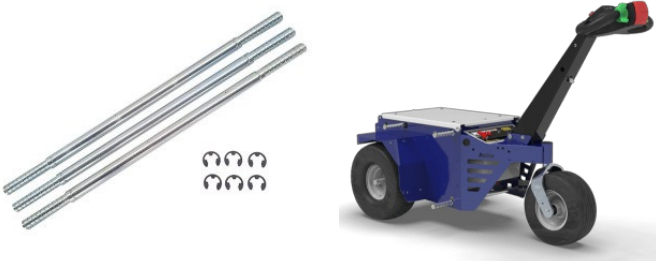
Superelastic non-tracking wheels kit

Z195.701

Frame top cover

Z195.850-1

MAX 10 pcs. - 12 kg ballast

T527.700

Ballasts fitting kit

ZG1.001.721===

Mounting plate for hitches with pivoting wheel

ZG3.220.720===



Drop pin hitch Ø16 mm

ZG3.221.720===



Drop pin hitch Ø20 mm

ZG3.223.720===



Drop pin hitch Ø35 mm

ZG3.224.720===



Drop pin hitch Ø40 mm

ZG3.212.720===



Ball/pin hitch Ø20-25

ZG3.235.720===



Hitch for trash bins

ZG4.220.720===



Pivoting support arm for hitches

ZG1.610.720===



Electric sliding support for hitches

ZG6.601.720===



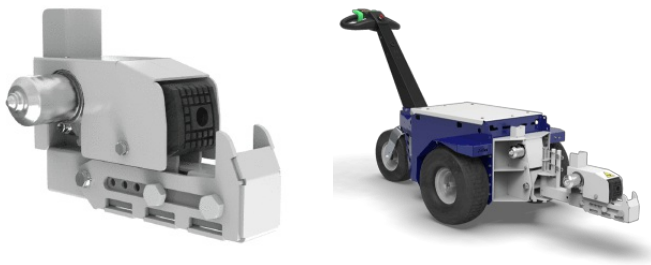
Electric controlled tilting arm

ZG3.303.720===



Adjustable hitch for Roll box

ZG3.630.725===



Horizontal electric clamp hitch

O005.720===



Manual pump with 1,2 lt. tank

ZG0.821.720===



Fitting kit for hydraulic pump on M series

ZG6.801.721===



Hydraulic tilting arm for hitches

O251.014-1750



225 bar tube O+O 1/4 0° - 1750 mm

O251.014-1250



225 bar tube O+O 1/4 0° - 1250 mm

ZG3.820.720===

Hydraulic clamp hitch

ZG3.820.721===

Reinforced hydraulic clamp hitch

O252.014-780

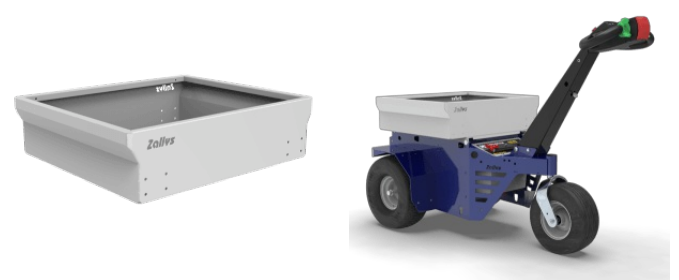
225 bar tube F 1/4 + O 0° 1/4 - 780 mm

ZG3.250.720===

[For Ø100/125mm wheels] Hitch with adjustable width for trolleys

ZG3.250.730===

[For Ø180/200mm wheels] Hitch with adjustable width for trolleys

ZC002.720===

Basket 650 x 550 x 150 mm

Z099.722===

Telescopic pole mounted flashing beacon

E550.750===

Emergency stop

E204.701===



Digital hour meter

E506.750===



Key Pad on/off

Z366.710===



Guard for pivoting wheel