



**Zallys**<sup>®</sup>

• • • the passion for moving

M5



Tow



• • • the passion for moving

# M5


 4.000 kg     5,5 km/h     15 %






# M5

*Industrial electric power pusher*

 4.000 kg

 5,5 km/h

 15 %

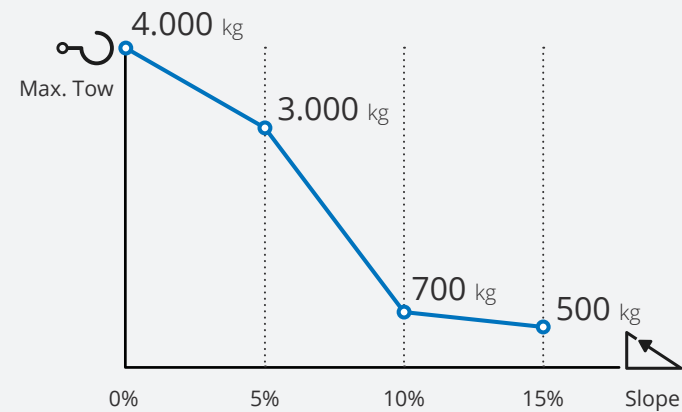
- for loads up to **4.000 kg**;
- **ATEX** and **IECEX** certifications available for use in potentially dangerous and explosive environments;
- with **pneumatic wheels** for indoor and outdoor use;
- **5-level speed** adjustment;
- wide range of **standard or customizable hitches** upon request.



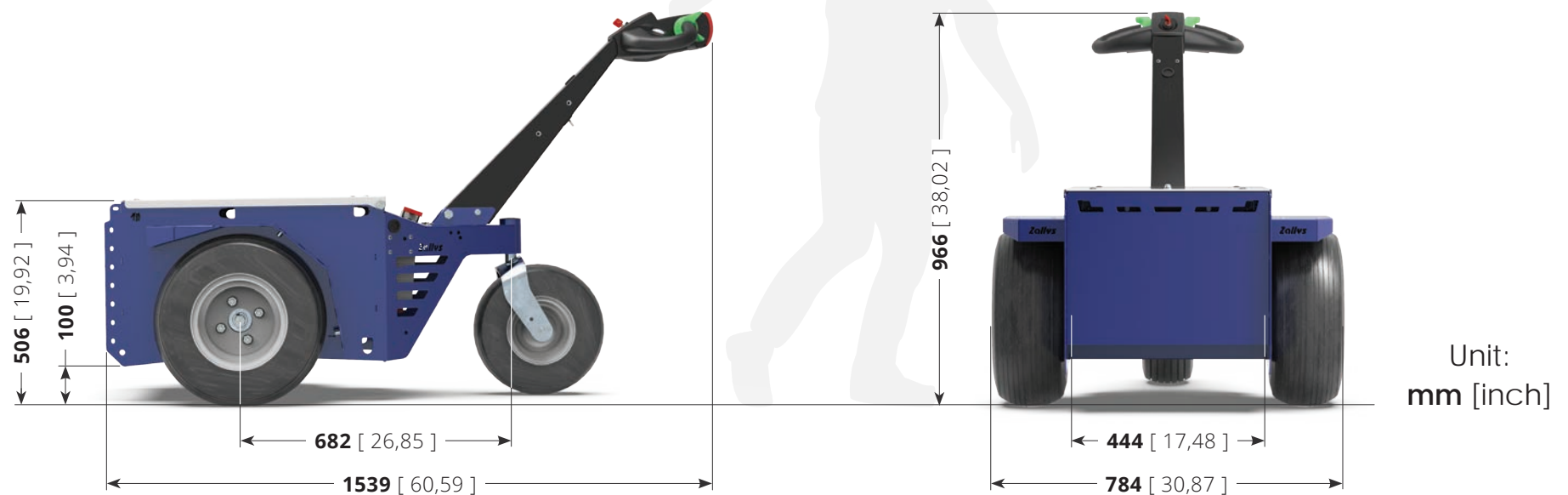
# Technical sheet

Model name	M5
Certification	CE
Tow capacity	4.000 kg
Maximum speed	5,5 km/h
Batteries	AGM 130 Ah
Weight (without batteries)	90 kg
Length	1.539 mm
Width	784 mm
Height	966 mm
Steering diameter	1,50 m

## Performances on slopes



While the hook force expressed in N remains unchanged, the towing capacity expressed in kg may vary based on: type of terrain on which towing is carried out, use or not of ballast and type of wheels mounted on the vehicle and trailer.



# Ergonomic driving



**M5 tiller head** has been designed and built to make the use of the machine more ergonomic for the operator, ensuring the **right comfort for prolonged use** during the work shift. Its ergonomic design allows you to have **everything at your fingertips**.

The structure is made of resistant materials in case of accidental impacts.



# Guaranteed autonomy



M5 is equipped as standard with two **130Ah** batteries, which guarantee the machine an autonomy of **8 working hours with continuous use**.

The batteries are hermetic **AGM** and therefore **do not require maintenance**.



# 5 levels of speed

The **speed of M5 is adjustable on 5 levels**, to adapt the conduction based on the type of operation you are facing. The so-called *Flex-to-go* system, designed to be able to carry out **maneuvers in fewer steps** by reducing speed in tight spaces and **travel long distances more quickly** by accelerating on straights.

For each level the speed of the machine increases by 20%, according to this curve:

- 1<sup>st</sup> level: Speed at 20%;
- 2<sup>nd</sup> level: Speed at 40%;
- 3<sup>rd</sup> level: Speed at 60%;
- 4<sup>th</sup> level: Speed at 80%;
- 5<sup>th</sup> level: Maximum speed;



# Safety

Just like all Zallys vehicles, **M5** is equipped **as standard** with several systems to guarantee the **maximum safety** to the operator during use, helping to build a safe and productive work environment without risks of injuries or occupational diseases. The standard safety devices are:

- **Anti-crush button** on tillerhead;
- **Maintained action** controls;
- **Electrobrake** always active in absence of electrical current;
- Connector for the **interruption of power supply**.

Furthermore, the following **optional devices** are available as accessories:

- **LED rotating beacon**;
- **Protection** for pivoting wheel;
- Mushroom button for **emergency stop** on tillerhead;
- **Numeric keypad** instead of the key for turning on the machine.



# Modular ballasts

The **modular ballast system** of **M5** gives flexibility in increasing the performance of the machine: the single unit weighs just **9.5 kg**, so a single operator can add or remove weight as needed, without the need for external lifting systems. This avoids lifting excessive weights, thus eliminating the associated health risks.



# Connection hitches



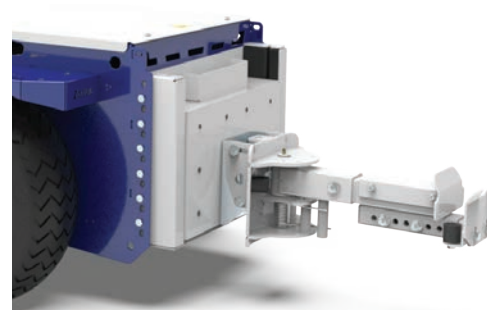
M5 has a wide range of **connection hitches**, mechanical or electrical, to be versatile and suitable for numerous applications.



Drop pin hitch  
Ø16 / 20 / 35 / 40 mm



Multifunction hitch  
ball / drop pin



Roll-Box hitch



Hitch for trash bins

# Application examples

Sectors of application:



INDUSTRIAL LOGISTICS



METALLURGICAL INDUSTRY




WASTE LOGISTICS



HOSPITALS



Metallurgical industry 



Industrial Logistics 




Industrial Maintenance 



Waste logistics 



Airports and Aviation 



Hospitals 

# Alternative versions

**M5** is available in the standard version or it is possible to request the modification for **ATEX** and **IECEX** certifications through specialized bodies.



## M5

*Standard version*

**M5** is ideal for moving wheel loads up to **4,000 kg** effortlessly and efficiently.



## M5 | ATEX

*ATEX and IECEX certifications*

Upon request, **M5** can be modified according to **ATEX** or **IECEX** directives (zones 1/21 and 1/22) for use in environments with potentially explosive dust and gases. The explosion-proof transformations and certification will be carried out through specialized bodies following their analysis and tests.



1996



...the passion for moving

2006



... the passion for moving

2016



[www.zallys.com](http://www.zallys.com)

**Contacts:**

[sales@zallys.com](mailto:sales@zallys.com)  
+39 0445 366785

Zallys srl srl - Via Palazzina 1, Sarcedo 36030 (VI) - Italia

**Distributor for Sweden:**



Micrologistic - Tumstocksvägen 11A  
187 66 Täby - Sweden

**Contacts:**

[info@micrologistic.com](mailto:info@micrologistic.com)  
Tel: +46 (0)8 544 401 50

**Web site:**

[www.micrologistic.com](http://www.micrologistic.com)