



M16

Electric tow tug with hydraulic lifting system

M16

Z176.730



4,0 km/h



1.800 kg



6.000 kg

- For loads up to 6.000 kg.
- Lifting capacity up to 1.800 kg.
- 5-levels speed adjustment.
- Wide range of accessories and connections.
- Adjustable stroke for the lifting arm.
- Ideal for carts with 2 wheels and 2 support legs.

👁️ **Front View**



👁️ **Side View**



👁️ **Rear View**



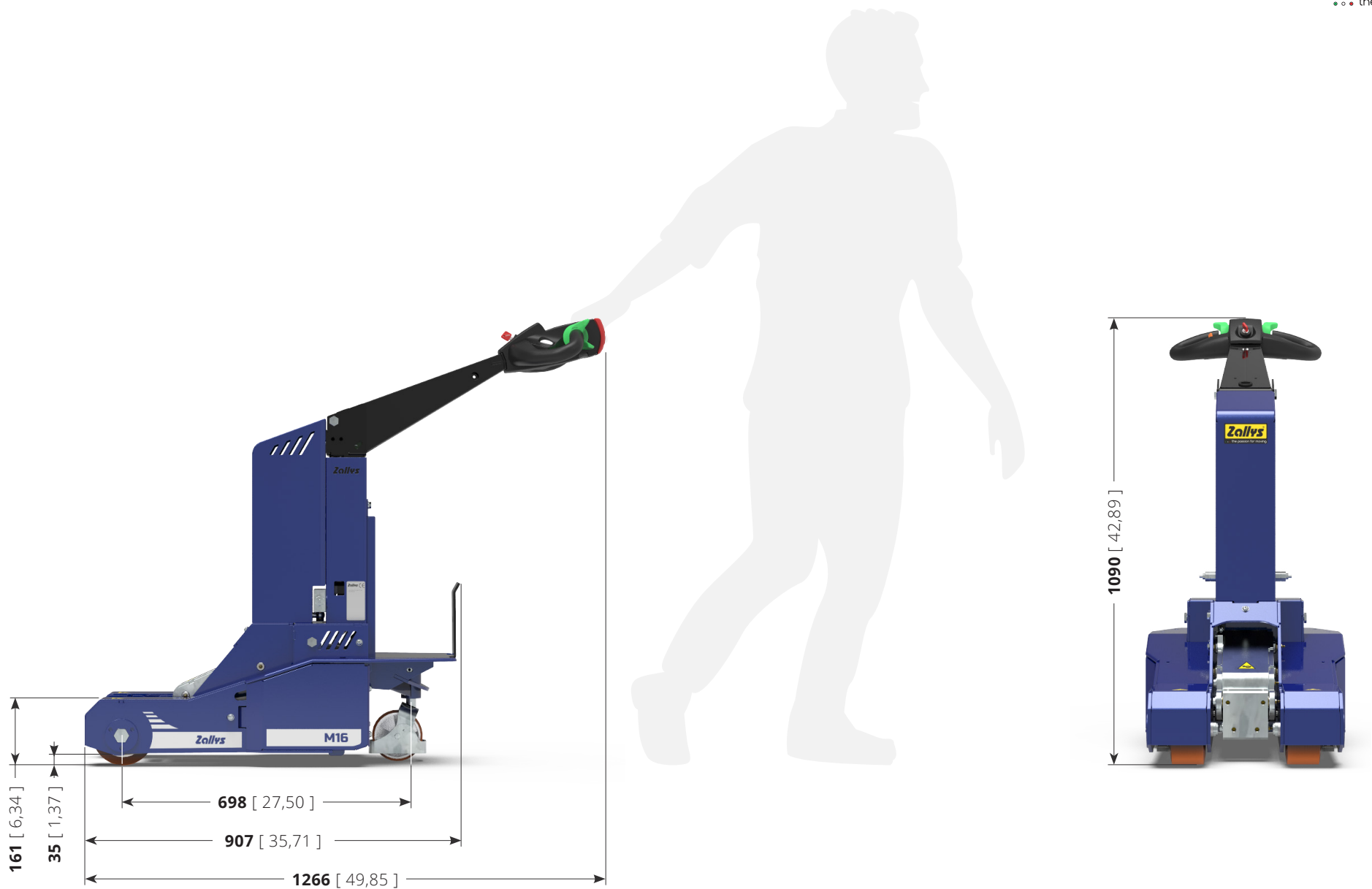
**Zolllys**[®]

TABLE:

Z176.730

M16

Unit: **mm** [inch]

Main sectors



TEXTILE
INDUSTRY



INDUSTRIAL
MAINTENANCE

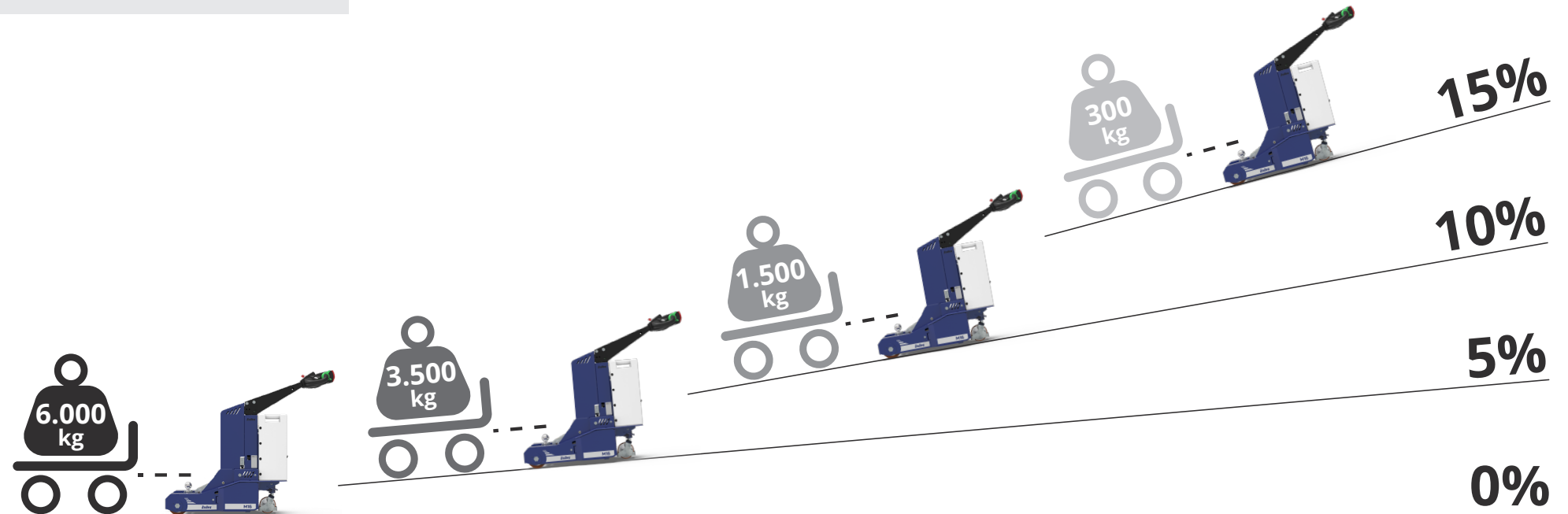


IMETALLURGICAL
AND TURNING
INDUSTRY

Performances on slopes

While the force expressed in N at the hook remains unchanged, the following circumstances **may affect the towing capacity expressed in kg:**

- **type of ground** on which the towing is performed;
- towing on **flat ground or on a slope;**
- use (or not) of **ballasts;**
- **type of wheels** mounted on the vehicle and on the trailer.



5 levels speed adjustment

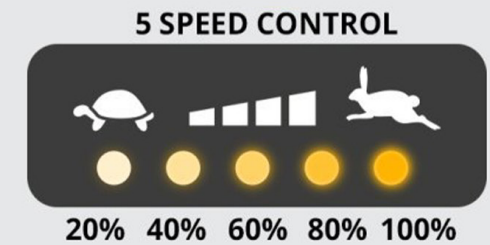
On the new M4 tillerhead by Zallys a button for the adjustment of the speed of the machine is mounted **as standard**. By clicking it, at each click you switch to the next level. This allows a fast and easy selection of the correct speed based on the kind of manoeuvre. **The Flex-to-Go system** has been studied to give a better maneuverability in confined spaces and more speed on the longer journeys.

Each click adds **20% more speed**.

Speed ramp:

20% - 40% - 60% - 80% - 100%

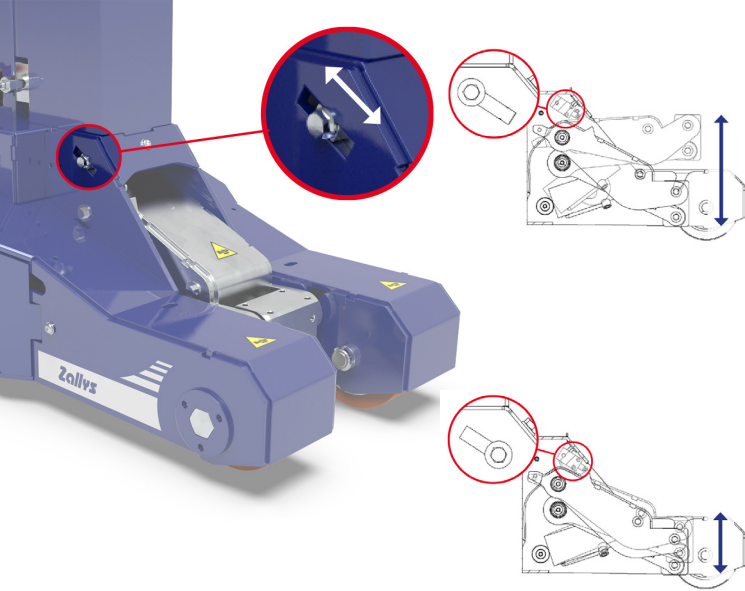
Once the maximum speed is reached, by pressing the button again it returns to 20%.



Ergonomic driving

Zallys' tillerhead has been conceived and produced to make the use of the machine more ergonomic for the operator, guaranteeing the right **comfort while driving during the work shift**. Its **ergonomic design** allows to have **all the driving controls at your fingertips**, the display with the battery charge level and the power key for an easy and fast ignition. **The structure** is made of **resistant materials** in case of accidental bumps.





Hydraulic lifting system with adjustable stroke

M16 has a powerful hydraulic lifting system, controllable directly from the tillerhead, capable of lifting carts up to 1.800 kg. This feature allows to handle carts with 2 wheels and 2 support legs, such as the carts for fabric reels inside textile industries or the carts for panels. Moreover, thanks to a micro-switch on the side of the machine, it is possible to adjust the maximum stroke of the arm depending on the situation.



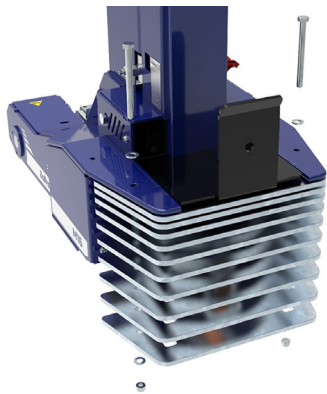
45Ah - AGM



40Ah - Litio

Interchangeable battery packs 24/7

Battery packs are lightweight and easily **interchangeable** in order to cover several work shifts: when one is discharged you can put it in charge and immediately replace it with a fully charged one. This way, the machine is always operating! Moreover, **different amperages** are available according to your needs: 45Ah AGM or 40Ah Lithium.

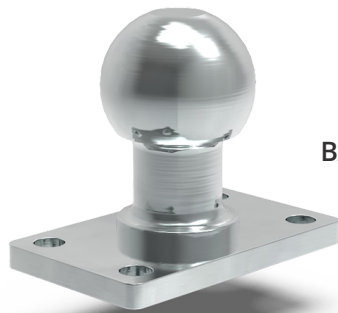


Modular ballast system

Zallys modular system guarantees **maximum flexibility** on increasing the vehicle's performances. With just **3 kg unit weight**, single ballasts are lightweight and can be equipped **without physical effort by the operator**, while maintaining all their effectiveness.

STANDARD HITCH

There are several typologies of carts on the market, each one with its peculiar characteristics and features. That's why Zallys makes available on **M16** both standard hitches for the most common trailers and customized solutions for the most specific applications.



BALL HITCH



TOW BALL HITCH



**TURNING HITCH
WITH CUSTOMIZABLE
CONNECTION**

ACCESSORIES





Examples of applications

on various production sectors



TEXTILE INDUSTRY

Zallys
... the passion for moving





INDUSTRIAL MAINTENANCE

Zalys®
... the passion for moving





METALLURGICAL INDUSTRY

Zollys
... the passion for moving





• • • the passion for moving

Zallys srl srl - Via Palazzina 1, Sarcedo
36030 (VI) - Italia

Contacts:
sales@zallys.com
+39 0445 366785

Web site:
www.zallys.com



Distributor for Sweden:



Micrologistic - Tumstocksvägen 11A
187 66 Täby - Sweden

Contacts:
info@micrologistic.com
Tel: +46 (0)8 544 401 50

Web site:
www.micrologistic.com